



Avoid confusion about our school uniforms with this helpful visual guide. Please email tferro@stmark-school.org or mfennessy@stmark-school.org with questions!

Pre-K 3 and 4 year olds

- St. Mark P.E. uniform worn year round. Gray tee shirt and burgundy mesh shorts which have "St. Mark P.E." printed on them. A maroon crewneck sweatshirt and sweatpants with "St. Mark P.E." are also available from Flynn and O'Hara Uniforms and can be worn in colder months.
- Athletic shoes - No shoes with lights or sound. No "Heelys"-style shoes are permitted.



Fall and Spring Uniform

- White blouse with Peter Pan collar, white turtleneck shirt, OR white or maroon embroidered polo shirt.
- Navy skort OR navy blue pants/shorts with black, brown, or St. Mark belt
- Regular or drop waist maroon plaid jumper from Flynn and O'Hara (PLEASE NOTE THAT POLO SHIRTS MAY NOT BE WORN WITH THE JUMPER.)
- Navy dress socks or mid-calf white crew socks OR navy, maroon or white tights
- Approved shoes (see below)
- OPTIONAL maroon St. Mark quarter zip
- OPTIONAL maroon or navy embroidered St. Mark sweater

K-5th Grade Girls



Winter Uniform

- Regular or drop waist jumper OR navy blue pants with black, brown, or St. Mark belt
- White blouse with Peter Pan collar or turtleneck shirt.
- Navy dress socks or mid-calf white crew socks OR navy, maroon or white tights
- Approved shoes (see below)
- OPTIONAL maroon St. Mark quarter zip
- OPTIONAL navy blue or maroon embroidered St. Mark button down sweater

LEGGINGS ARE NOT PERMITTED AT ANY TIME

Fall and Spring Uniform

- Navy blue slacks or dress shorts with black, brown, or St. Mark belt
- Solid black, brown, or St. Mark belt
- White or maroon embroidered St. Mark polo shirt
- Navy blue or maroon dress socks or **mid-calf** white crew socks
- Approved shoes (see below)
- OPTIONAL maroon St. Mark quarter zip
- OPTIONAL maroon or navy embroidered St. Mark sweater

K-5th Grade Boys



Winter Uniform

- Navy blue slacks with solid black, brown, or St. Mark belt
- White or maroon embroidered St. Mark polo shirt
- Navy blue or maroon dress socks or **mid-calf** white crew socks
- Approved shoes (see below)
- OPTIONAL maroon St. Mark quarter zip
- OPTIONAL maroon or navy embroidered St. Mark sweater

6th-8th Grade Girls

Fall and Spring Uniform

- Navy kilt (NOTE: THIS IS A DIFFERENT PIECE FROM THE SKORT FOR K-5) OR navy pants/dress shorts with black, brown, or St. Mark belt
- White or maroon embroidered St. Mark polo shirt OR white oxford shirt
- Navy or maroon dress socks or mid-calf white crew socks OR navy, maroon or white tights
- Approved shoes (see below)
- OPTIONAL maroon St. Mark quarter zip
- OPTIONAL maroon or navy embroidered St. Mark sweater



Winter Uniform

- Navy kilt (NOTE: THIS IS A DIFFERENT PIECE FROM THE SKORT FOR K-5) OR navy pants with black, brown, or St. Mark belt
- Navy or maroon dress socks or mid-calf white crew socks OR navy, maroon or white tights
- White oxford
- Approved shoes (see below)
- OPTIONAL maroon St. Mark quarter zip
- OPTIONAL maroon or navy embroidered St. Mark sweater

6th-8th Grade Boys

Fall and Spring Uniform

- Navy pants/dress shorts with black, brown, or St. Mark belt
- White or maroon embroidered St. Mark polo shirt OR white oxford shirt with maroon St. Mark tie
- Navy or maroon dress socks or **mid-calf** white crew socks
- Approved shoes (see below)
- OPTIONAL maroon St. Mark quarter zip
- OPTIONAL maroon or navy embroidered St. Mark sweater



Winter Uniform

- Navy pants with black, brown, or St. Mark belt
- White oxford shirt with maroon St. Mark tie
- Navy or maroon dress socks or mid-calf white crew socks
- Approved shoes (see below)
- OPTIONAL maroon St. Mark quarter zip
- OPTIONAL maroon or navy embroidered St. Mark sweater

Accepted Accessories

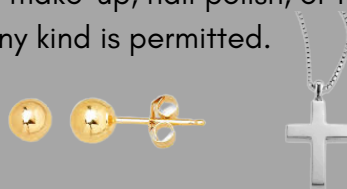
Shoes

- See the Van Dyke and Bacon flier for permitted standard uniform shoe.
- Girls in grades K-3 may wear black Mary Jane shoes with rubber soles
- On PE days, students may wear sneakers. They may not have wheels or lights of any kind.
- Crocs, slides, or slippers are never permitted, even on out of uniform days.**



Jewelery and Makeup

- Watch and/or a religious medal are permitted.
- Girls may wear one pair of post earrings on the lower lobe of the ear, provided they do not extend beyond the ear lobe. Boys may not wear earrings at any time. Facial piercings of any kind are not permitted.
- No make-up, nail polish, or false nails of any kind is permitted.



Socks

- Crew socks are a style that covers the entire ankle and rise to the mid-calf level. Socks may not have any logos, monograms, or lettering, the only exception being the St. Mark socks sold by the St. Mark Athletic Association.

